



# GAT MONTHLY MEMBERSHIP PROGRESS REPORT

Results as of: 2/28/2023

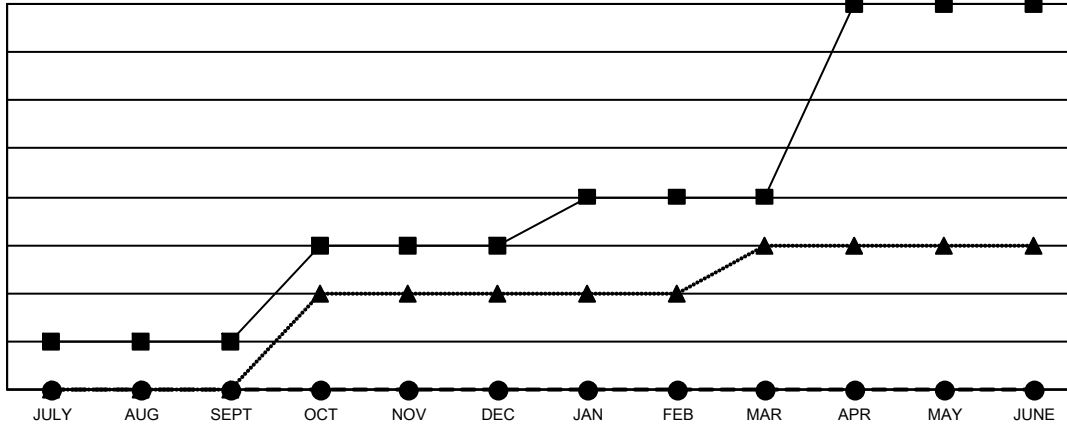
Multiple District N

LOCATION: CANADA

Clubs			
RESULTS FOR 2022-2023			
QUARTER	NEW CLUB GOAL	NEW CLUBS	DROPPED CLUBS
JULY/AUG/SEPT	1	0	2
OCT/NOV/DEC	2	0	0
JAN/FEB/MAR	1	0	0
APR/MAY/JUNE	4	0	0

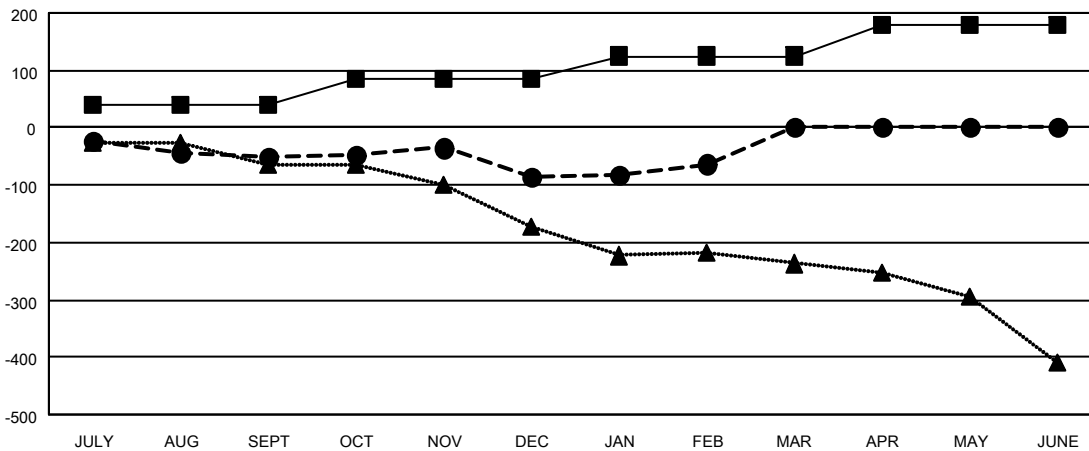
Members			
RESULTS FOR 2022-2023			
QUARTER	MEMBER GROWTH NET GOAL	MEMBER GROWTH ACTUAL	DROPPED MEMBERS ACTUAL (including transfers)
JULY/AUG/SEPT	40	63	99
OCT/NOV/DEC	45	159	182
JAN/FEB/MAR	40	169	134
APR/MAY/JUNE	55	0	0

GOALS AND ACTUAL NEW CLUBS CUMULATIVE



- CURRENT YEAR GOALS FOR NEW CLUBS
- CURRENT YEAR ACTUAL NEW CLUBS
- ▲- LAST YEAR ACTUAL NEW CLUBS

GOALS AND ACTUAL MEMBERS CUMULATIVE



- MEMBER GROWTH NET GOAL
- MEMBER GROWTH ACTUAL
- ▲- LAST YEAR MEMBERSHIP ACTUAL

DROPPED CLUBS: 2	
<b>DROPPED MEMBERS</b>	
DECEASED	60
CLUB CANCELLED	0
OTHER	355
<b>TOTAL</b>	<b>415</b>

121 CLUBS OF 241 ADDED 1 OR MORE NEW MEMBERS

[CLICK HERE FOR CUMULATIVE MEMBERSHIP DATA](#)

GENDER DISTRIBUTION	
MALE	3,245 (61.88%)
FEMALE	1,998 (38.10%)
NON BINARY	0 (0.00%)
PREFER NOT TO ANSWER	1 (0.02%)
<b>TOTAL FAMILY UNIT MEMBERS</b>	<b>1,056</b>
<b>FAMILY MEMBERS PAYING HALF DUES</b>	<b>543</b>